

EARLY INSIGHTS: Behavior and Comorbidity Patterns During the COVID-19 Pandemic, a Direct-to-Participant Study

Published by LunaPBC, December 2020

340K+

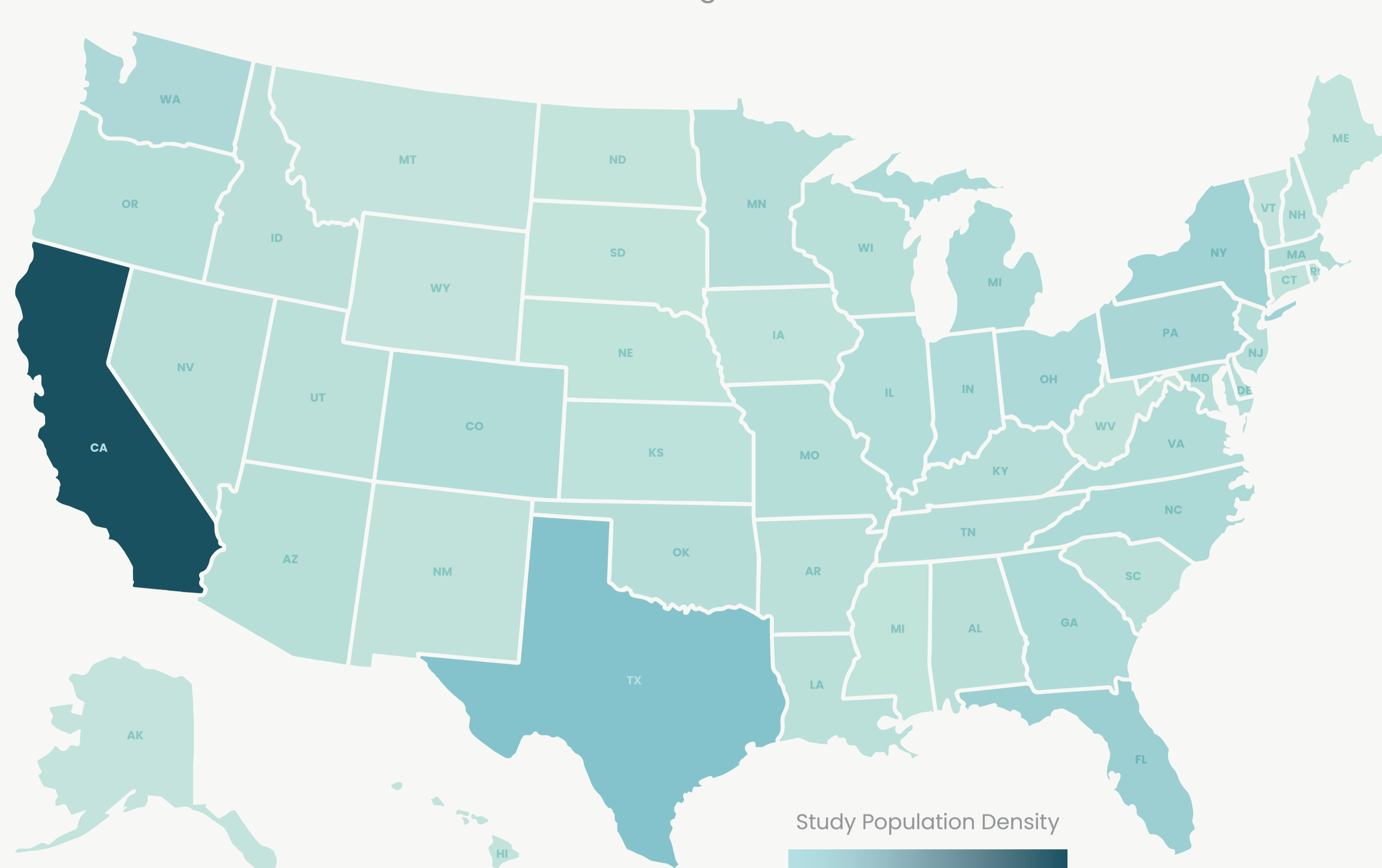
Questions answered and counting

50+

Covers all 50 states plus Washington DC, Puerto Rico, and the U.S. Virgin Islands

20%

Respondents are outside of US territories



1 in 20

Tested positive for COVID-19

41.7%

Tested positive and have an existing health condition

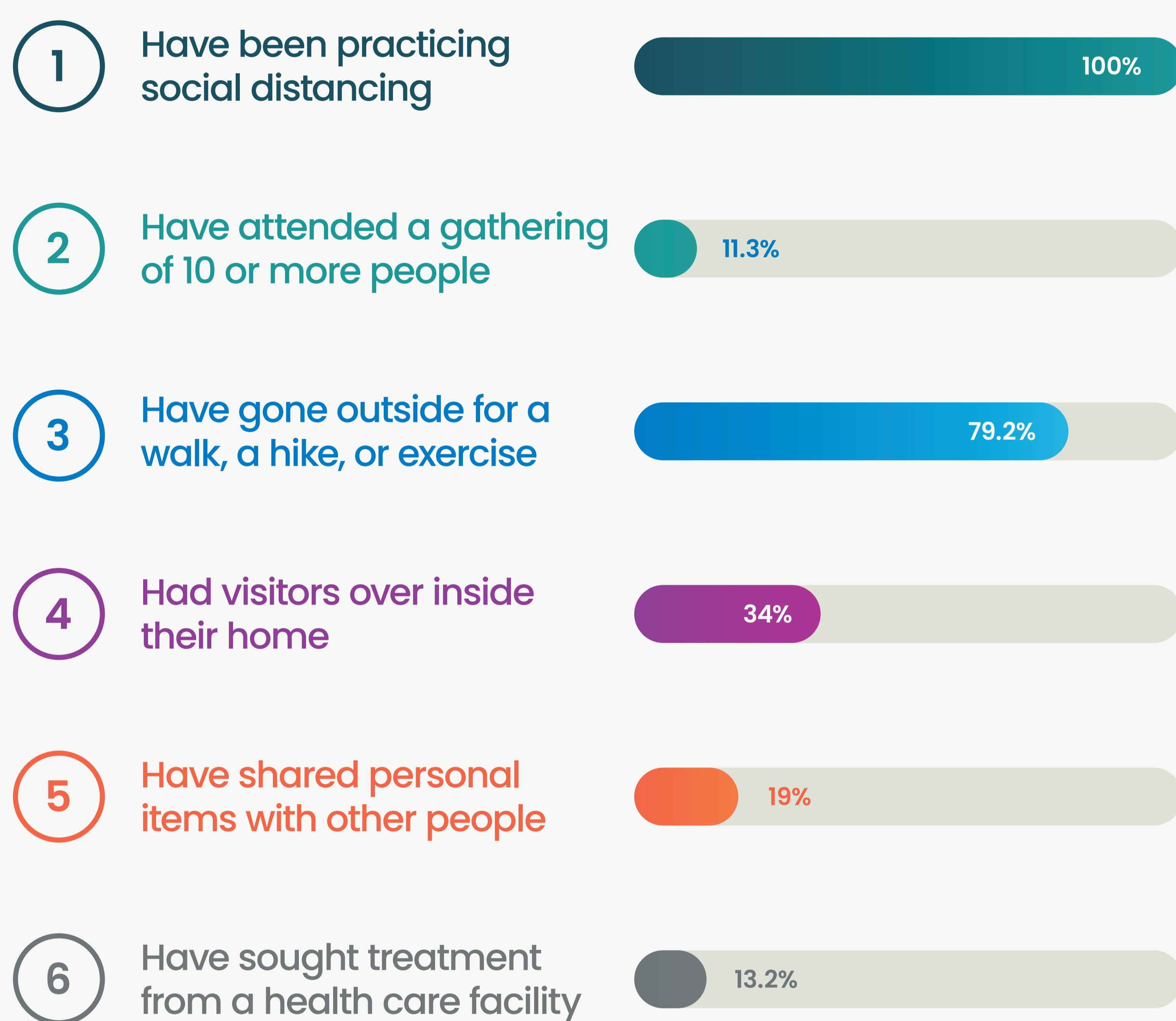
30%

Tested positive and reside in a stay-at-home-order area

55%

Of those who tested positive were between the ages of 25 and 44

BEHAVIORS OF PARTICIPANTS WHO TESTED POSITIVE AND HAVE AN EXISTING HEALTH CONDITION



COMMUNITIES COMMITTED TO SOLVING COVID

COVID-19 Study partner and CEO and President of Genetic Alliance, Sharon Terry, presented these and other early study findings to the National Academy of Medicine's (NAM) Standing Committee on Emerging Infectious Diseases and 21st Century Health Threats. NAM is one of three academies that make up the National Academies of Sciences, Engineering, and Medicine (the National Academies) in the United States. The National Academies are private, nonprofit institutions that work outside of government to provide objective advice on matters of science, technology, and health.



This study is conducted by the people, for the people, and in collaboration with various communities. This inclusive approach has garnered broad appreciation both for its ability to incorporate real-world experiences but also because it's empowering people to have voice in what will not be a one-size-fits-all solution to COVID-19. We are responding to NAM's recommendation to expand to at-risk individuals such as those in nursing homes and detention centers. When unique voices and experiences are represented, researchers can deliver more precise answers.

SHARON TERRY

CEO and President of Genetic Alliance



ABOUT LUNADNA™ AND LUNAPBC™

LunaDNA makes discovery representative of the real world and aligned with people's true goals by giving all individuals a role in research from right where they are. LunaDNA is a digital data-sharing community owned by its members. By sharing your health information, you directly power disease research. As a member, your data is confidential. You control the information you share - only one copy of your data exists and you control its inclusion in LunaDNA. We make it simple for all credible researchers to pursue health and quality of life discovery. LunaDNA is managed by Public Benefit Corporation, LunaPBC.

This study is currently open



Join Now at learn.lunadna.com/covid19

Your home for health discovery

THIS IS AN IRB-APPROVED STUDY CONDUCTED BY LUNAPBC, INC. OPEN TO ALL INDIVIDUALS OVER 18 YEARS OLD, REGARDLESS OF COVID-19 STATUS. The study opened on March 31, 2020 and continues to enroll (visit learn.lunadna.com/covid19 to join and share your insights). The program gives individuals the tools to capture their lived experience, recognizing that each person, community, and geography is impacted differently and will likely have different long term effects. LunaPBC is collaborating with various entities to support privacy-protected COVID-19 information sharing and research including Genetic Alliance/Disease InfoSearch (studying COVID-19 and co-morbidities), xCures (studying COVID-19 and cancer), San Diego Blood Bank (building a data sharing community for study enrollment), and the Propionic Acidemia Foundation (studying COVID-19 and genetic disorders). We encourage leaders to leverage this study and infrastructure to understand COVID-19 in their communities. Please contact us at collaboration@lunadna.com to get started.